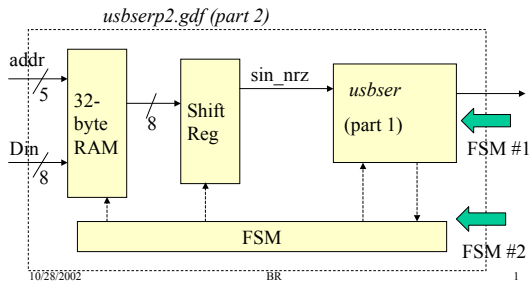


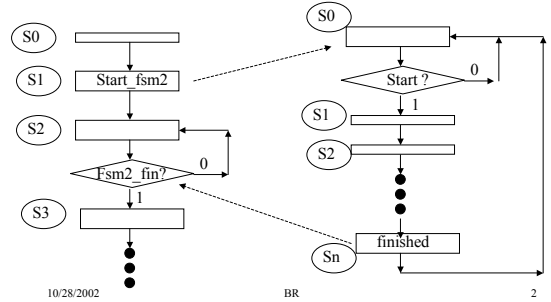
Cooperating Finite State Machines

- In the Serial data transfer lab, there is more than one FSM

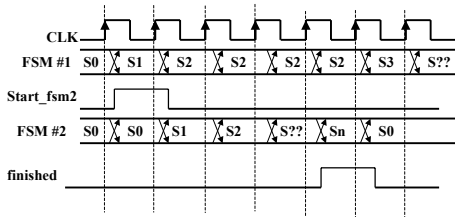


Coordinating FSM Actions

- Must use handshaking lines to coordinate FSM actions

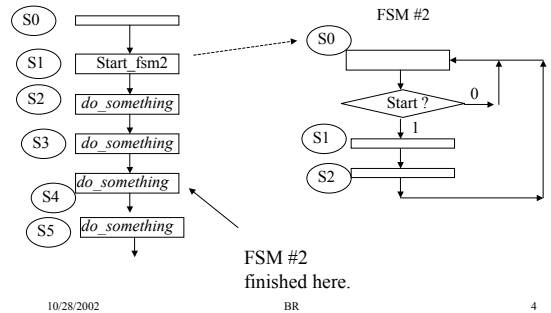


Timing of Two FSMs

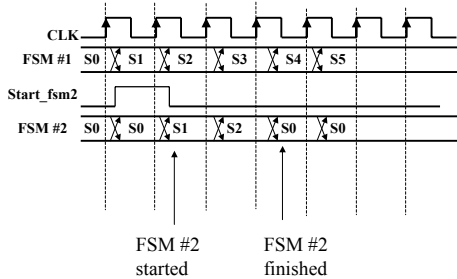


Other Options

- Do not need 'finish' handshake line if the number of clock cycles of operation is known.

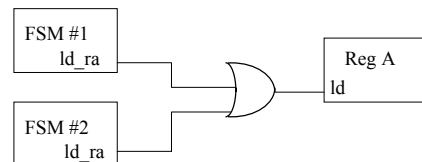


Timing of Two FSMs



Controlling Data Path Components

If more than one FSM controls a datapath component, then have to OR their output lines



Mux Controls

